



DARBY DENTAL SUPPLY, LLC

INTRODUCING

Variolink[®] Esthetic

Adhesive Cementation System



**“Esthetic Cementation
made Simple!”**



**ivoclar
vivadent[®]**
passion vision innovation

Variolink® Esthetic

Adhesive Cementation System

EXCEPTIONAL ESTHETICS



Variolink Esthetic is a light- and dual-curing luting composite for the esthetic and permanent cementation of ceramic and composite resin restorations.

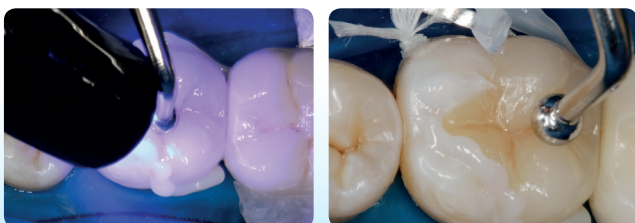
This material represents the next generation of the well-established, esthetic cements Variolink II and Variolink Veneer.

SIMPLICITY

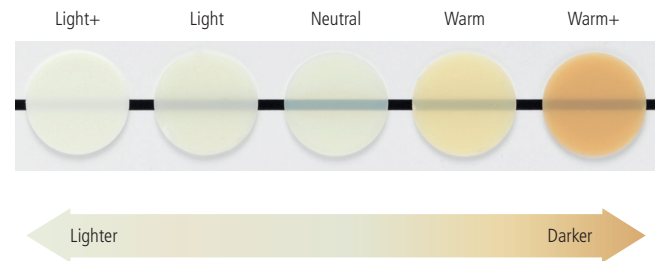
Easy clean-up

Easy clean-up of adhesive cements has always been an important benefit for doctors but not always achievable with these rather complex systems until now. Variolink Esthetic sets a new standard for easy removal of excess material making esthetic cementation simple.

A more technique tolerant clean-up process has been achieved with the smart combination of Ivocerin, the light initiator and a new light sensitivity filter. This allows the dental professional to easily clean-up excess material after successful pre-polymerization with the light. Ivocerin ensures fast and reliable curing of the material during the final light polymerization process.



The Effect shade concept



In order to precisely match the shade effect of the restoration with the adjacent natural dentition, Ivoclar Vivadent has developed the new, balanced and concise Effect shade system. The "Neutral" shade demonstrates the highest translucency level and therefore enables color-neutral cementation of the restoration. The shades "Light" and "Light+" produce a gradual brightening effect, while the shades "Warm" and "Warm+" result in the gradual darkening of the overlying ceramic and composite restoration.

Controlled viscosity

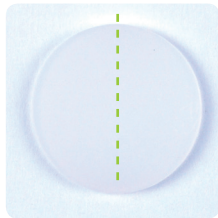
A viscosity controller combines the material's good flowing behavior with its stability. The cement is easy to extrude from the syringe. Excess material smoothly flows from the cement gap, but remains stable at the cementation joint so that it can be easily removed.



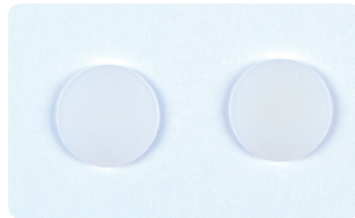
ONE SYSTEM FOR CLINICAL SUCCESS

Excellent shade stability

Variolink Esthetic® is 100% amine free in both the light-cure and dual-cure forms. This is possible with the patented Ivocerin, the light initiator in the light-cure cement and a new initiator system in the dual-cure cement. Variolink Esthetic forms the basis for long-lasting and reliable esthetic results even if exposed to intense light or a humid environment. Variolink Esthetic does not experience visible shade changes for the life of the restoration.



Variolink Esthetic Suntest (acc. to ISO 4049), left side exposed to light



Variolink Esthetic reference After immersion in water

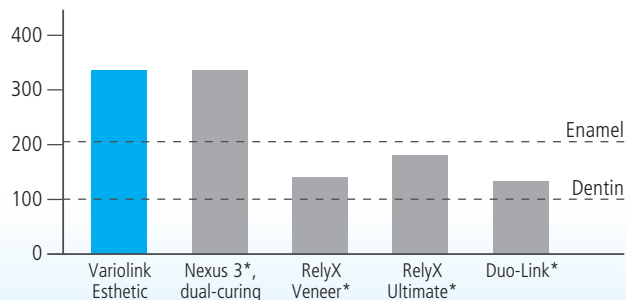
Impressive radiopacity

All of Variolink Esthetic's dual- and light-cure shades contain high levels of radiopacity making it easier to detect excess cement and secondary caries to ensure proper clean-up and treatment.



Variolink Esthetic LC (Neutral)

Radiopacity [% AI]



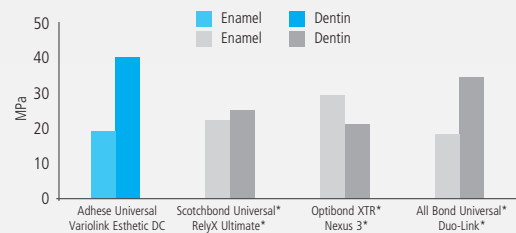
* Not registered trademarks of Ivoclar Vivadent AG. Source: R&D Ivoclar Vivadent AG, Schaan, 2014 (measured according to ISO 4049)

Optimal bonding

Adhese® Universal in the revolutionary VivaPen® ideally complements Variolink Esthetic in the cementation of esthetically demanding restorations. It is compatible with all etching techniques providing the clinician with options based on the clinical situation at hand. Adhese Universal ensures consistently high bond strengths and minimizes the risk of postoperative sensitivities. Variolink Esthetic can also be used in combination with Syntac® and ExciTE® F.



Shear bond strength after dual-curing – self-etch technique on enamel and dentin after 10,000 thermocycles



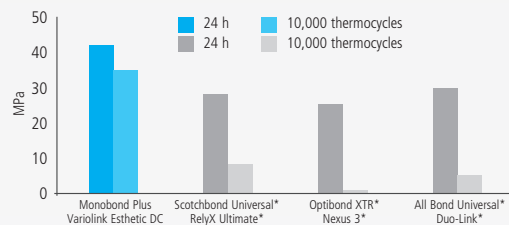
* Not registered trademarks of Ivoclar Vivadent AG. Source: R&D Ivoclar Vivadent AG, Schaan, 2014

Proven bond to restorations

When used with Monobond Plus®, Variolink Esthetic demonstrates excellent bond strength on restorations made of glass-ceramic materials such as IPS e.max® and IPS Empress®.



Tensile strength on IPS e.max (LS₂) glass-ceramic Initially and after ageing



* Not registered trademarks of Ivoclar Vivadent AG. Source: R&D Ivoclar Vivadent AG, Schaan, 2014

DELIVERY FORMS



Variolink Esthetic LC System Kit (only light-curing)

- 3 Syringes Variolink Esthetic LC, 2 g (light, neutral, warm)
- 3 Syringes Variolink Esthetic Try-In Paste, 1.7 g (light, neutral, warm)
- 1 Syringe Total Etch, 2 g
- 1 Adhese Universal VivaPen, 2 ml, or 1 bottle, 5 g
- 1 Bottle Monobond Plus, 5 g
- 1 Syringe Liquid Strip, 2.5 g
- Various accessories

5240002 (666433) with Adhese Universal VivaPen, 2 ml

5240004 (666065) with Adhese Universal bottle, 5 g

Variolink Esthetic DC System Kit (dual-curing)

- 3 Automix syringes Variolink Esthetic DC, 5 g (light, neutral, warm)
- 3 Syringes Variolink Esthetic Try-In Paste, 1.7 g (light, neutral, warm)
- 1 Syringe Total Etch, 2 g
- 1 Adhese Universal VivaPen, 2 ml, or 1 bottle, 5 g
- 1 Bottle Monobond Plus, 5 g
- 1 Syringe Liquid Strip, 2.5 g
- Various accessories

5240020 (666434) with Adhese Universal VivaPen, 2 ml

5240022 (666125) with Adhese Universal bottle, 5 g

Variolink Esthetic LC Refill (only light-curing)

- 1 Syringe, 2 g (in the selected shade)
- 5 Application tips

5240006 (666126) Light+

5240008 (666127) Light

5240010 (666128) Neutral

5240012 (666129) Warm

5240014 (666130) Warm+

Variolink Esthetic DC Refill (dual-curing)

- 1 Automix syringe, 5 g (in the selected shade)
- 10 Mixing tips

5240030 (666117) Light+

5240032 (666118) Light

5240034 (666119) Neutral

5240036 (666120) Warm

5240038 (666121) Warm+

Variolink Esthetic DC Refill (dual-curing)

- 1 Automix syringe, 9 g (in the selected shade)
- 15 Mixing tips

5240040 (666122) Light

5240042 (666123) Neutral

5240044 (666124) Warm

Variolink Esthetic Try-In Paste Refill

- 1 Syringe, 1.7 g (in the selected shade)
- 5 Application tips

5240050 (666067) Light+

5240052 (666113) Light

5240054 (666114) Neutral

5240056 (666115) Warm

5240058 (666116) Warm+

Accessories

9534659 (645951) Mixing tips, short, refill, 15 units

9532105 (559224) Variolink application tips, refill, 20 units



*Contact your Account Manager for more information on ordering this product



Finding your way out of the cements maze

The Cementation Navigation System, a new multimedia application from Ivoclar Vivadent, offers dentists practical orientation and guidance in the selection of the best luting material for each case.

www.cementation-navigation.com

100% CUSTOMER SATISFACTION
GUARANTEED!



DARBY DENTAL SUPPLY, LLC

To Reorder Call 800.645.2310
or Visit darby.com

ivoclar
vivadent®
passion vision innovation